

AL NAWRAS STEEL CO. LLC



LEADER IN STEEL FABRICATION



Primary Business Address
Industrial 17, Sharjah, UAE
P.O Box 4806

+97165347957

admin@alnawrassteel.com



CB-MS-51707270105

Content

<u>INTRODUCTION</u>	01
<u>FACILITIES</u>	02
<u>RESOURCES AND MANPOWER</u>	03
<u>QUALITY MANAGEMENT SYSTEMS</u>	04
<u>QUALIFICATIONS / CERTIFICATIONS</u>	05
<u>PROJECT PHOTOS</u>	06



INTRODUCTION

COMPANY OVERVIEW

Al Nawras Steel Co. LLC is a Sharjah, UAE-based company specializing in steel fabrication in oil and gas, marine, civil engineering sectors serving the Middle East and international clients since 1986.

CERTIFICATIONS AND STANDARDS

Al Nawras Steel Co. LLC is an ISO 9001, ISO 14001 and OHSAS 18001 certified company (since 2007), APIQ1 (since 2015) including API monogram (4F - Substructure and Mast) and CE Marking Certification.

FACILITY OVERVIEW

Our main facility has a total area of 10,000 sqm complete with in-house blasting and painting facility and a complete line of machineries and equipment to execute and complete the requirement of projects.

MORE CAPACITY FOR BIGGER PROJECTS

A second facility in Hamriya Freezone with an area of 15,000 sqm has the same manufacturing capabilities with more area for bigger project requirements.

OUR FABRICATION AND SERVICING ACTIVITIES INCLUDES: -

- Design and Development (Structural and Engineering Designs).
- Preparation of Fabrication drawings.
- Manufacturing of Substructure and Masts - PSL 1.
- Fabrication and Erection of Steel Structures for Industrial, Chemical and Cement Plants. i.e Tanks, Silos, Hoppers, Chimneys, Pipe supports etc.
- Fabrication and assembling of Mud Tank systems for the oil Industry.
- Fabrication of Pressure Vessel Tanks. (API / ASME specs.)
- Piping in Carbon, Stainless and Alloy Steels.
- General Fabrication of Mild Steel, SS, Alloy.
- CNC Plasma Cutting and General Machining
- Supply of Steel Materials
- Blasting and Painting
- Onsite Installation and Repair
- Technical manpower support
- Labour Supply



FACILITIES

INDUSTRIAL AREA 17, SHARJAH, UAE

LEADER IN STEEL FABRICATION



FACILITIES

INDUSTRIAL AREA 17, SHARJAH, UAE

LEADER IN STEEL FABRICATION



RESOURCES AND MANPOWER

Our workforce is composed of over 150 experienced production and service personnel made up of (foreman, fabricators, certified welders, fitters, operators, painters, riggers, stores, in-spectors, and logistics). Together with our top management and qualified staffs, we are dedicated in planning, execution, monitoring and supporting every aspects of the project from enquiry up to delivery.

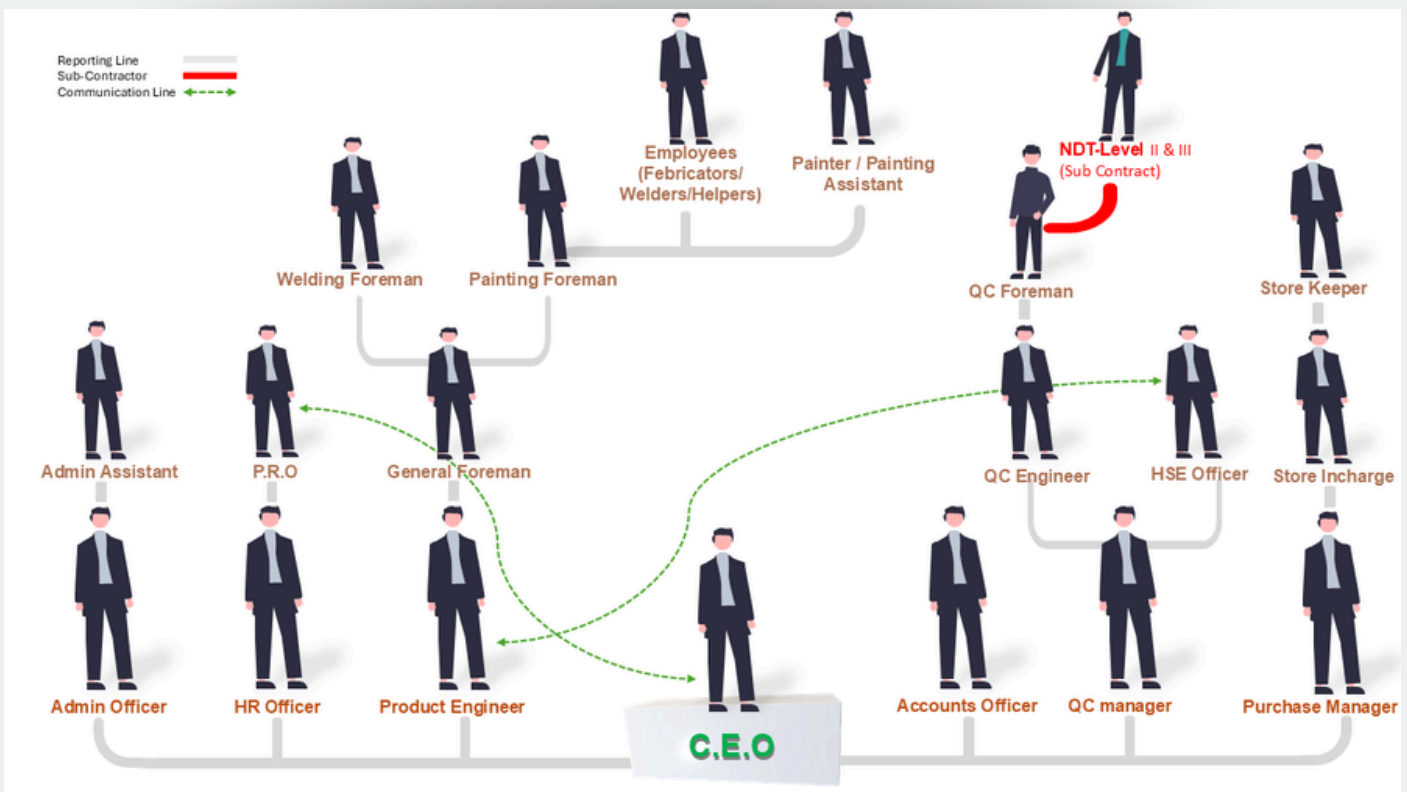
OUR MACHINERIES AND EQUIPMENT INCLUDES:-

- 2 CNC Band Saw Machine, with Automatic Line cutting and drilling
- 1 CNC Plasma and Oxyfuel Cutting Machine (2 x 6)
- 4 Lathe Machines, 2 Milling Machines, 3 Table Drilling Machine
- 20 Gas Cutting Torch sets w/ 2 pug cutting machines
- 55 Welding Machines (Arc, MIG, TIG)
- 60 Grinding Machines (Small, Big)
- 15 Magnetic Drills, 20 Hand Drills
- 2 Threading Machines
- 2 Rolling Machines
- 1 Bending Machine
- 1 Shearing Machine
- 4 Overhead Cranes (8 tons. 1 no., 5 tons. 3 nos.)
- Automatic line Sand Blasting Machine
- 2 Airless Paint System
- 2 Forklifts 6 ton.
- 2 Diesel Generators



RESOURCES AND MANPOWER

AL NAWRAS STEEL CO. LLC ORGANIZATION CHART



RESOURCES AND MANPOWER



CNC PLASMA AND OXYFUEL CUTTING MACHINE
(2 X 6)



CNC BAND SAW MACHINE WITH AUTOMATIC LINE CUTTING
AND DRILLING



RESOURCES AND MANPOWER



HYDRAULIC BENDING MACHINE



SHEARING MACHINE



RESOURCES AND MANPOWER

LEADER IN STEEL FABRICATION



AUTOMATIC LINE BLASTING MACHINE

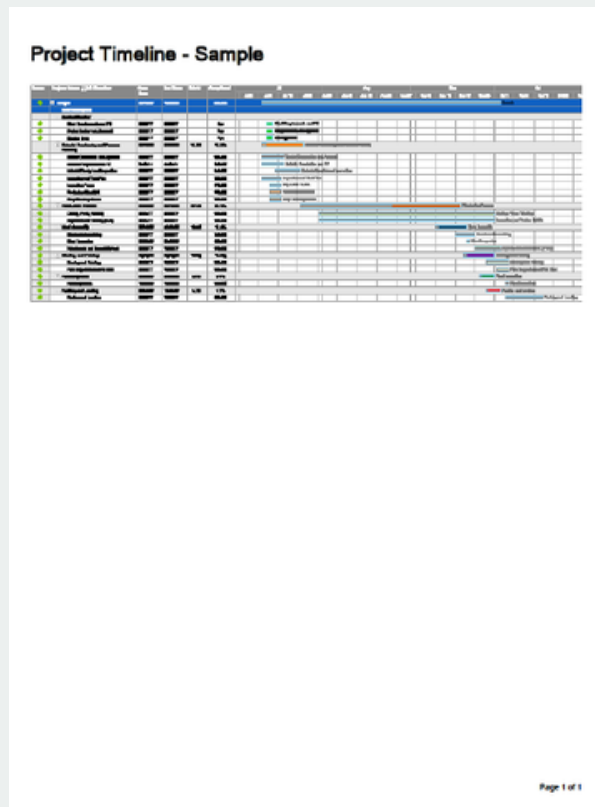
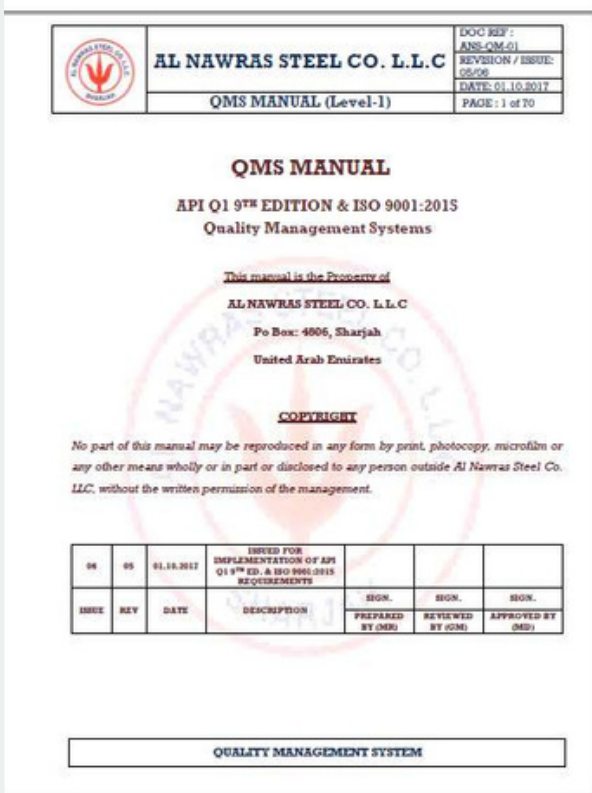


CNC ROLLING MACHINE

QUALITY MANAGEMENT SYSTEM

Since 2003, our organization have developed, implemented and complied to the international standards of ISO 9001 and API Q1 to maintain the highest quality of products that we manufacture. In order to maintain the system, our staff and workers are continuously trained and updated with the latest procedures to improve the entirety of the QMS.

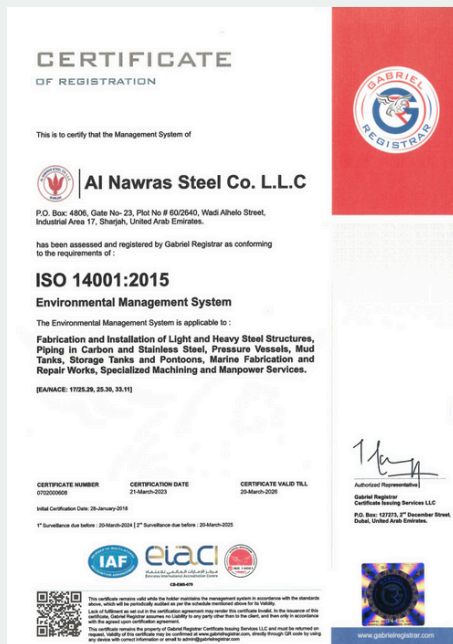
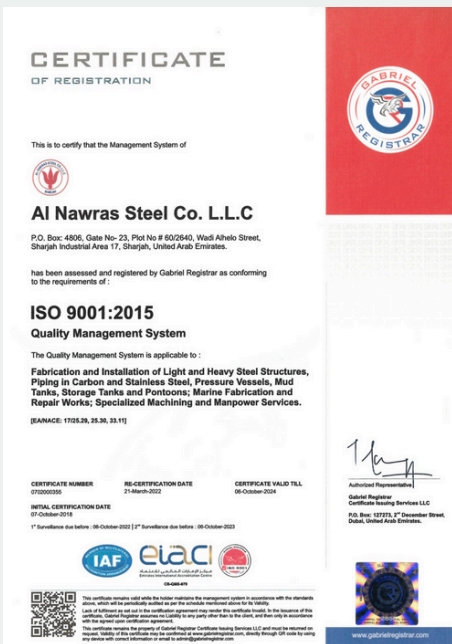
With the help of digital world and technology, we have developed a system to improve communications internally as well as externally with client. Through this platform, we are able to plan, execute, update, monitor and collaborate on every projects in real time and all of these are instantly shared with the client from an email, pc or mobile.



QUALIFICATIONS / CERTIFICATIONS

LIST OF QUALIFIED WELDING PROCEDURES

LEADER IN STEEL FABRICATION



PROJECT PHOTOS

LIST OF QUALIFIED WELDING PROCEDURES

WPS #	Welder ID	Process	P. no. / Group / Material Qualified	F. No.	Progression	SFA Spec	Base Metal	Root Rod	Filling/Capping	Thickness Actual	Position	Thickness Qualified	Last Verified Weld Date	Validity Due Date	Remarks
WPS #1		SMAW	P1 TO P1	3 & 4	UPHILL	5.1	SA106, G6B	E8010	E7018-1	6", 6mm	6G	1.5MM TO 19MM			ASME SEC IX
WPS #2		SMAW	P1 TO P1	3 & 4	UPHILL	5.1	ASTM A106 GR B	E8010	E7018	6", 19MM	6G	5MM TO 38MM			ASME SEC IX
WPS #5		SMAW	P1 TO P1	3 & 4	UPHILL	5.1	ASTM A 106 GR B	E8010	E7018-1	6", 22MM	6G	5MM TO 44MM			ASME SEC IX
WPS #6		SMAW	P1 TO P1	3 & 4	UPHILL	5.1	S275JR	E7018-1	E7018-1	30MM	3G	5MM TO 60MM			AWS D1.1
WPS #7		SMAW / FCAW	P1 TO P1	3 & 6	UPHILL	5.1, 5.2	A106	E8010	E71T-1	6" DIA, 19MM	6G	5MM TO 30MM			ASME SEC IX
WPS #9		GMAW	P1 TO P1	6	DOWNHILL	5.16	S275JR	ER70 S-6	ER70 S-6	6MM	3G	3MM TO 12MM			ASME SEC IX
WPS #10		SMAW	S355JR	3 & 4	UPHILL	5.1	S355JR	E7018-1	E7018-1	25MM	3G	3MM ABOVE			AWSD1.1
WPS #12		GTAW	P8 TO P8	6	UPHILL	5.9	ASTM SA312 GR TP316L	ER316L	ER316L	2"DIA 3.91MM	6G	ALL, 7.82MM			AWSD1.1
WPS #14		FCAW	ASTM A572 TO S355JR	6	UPHILL	5.2	ASTM A572 TO S355JR	E71T-1C	E71T-1C	25MM	3G	3MM TO UNLIMITED			AWSD1.1 but joint CJP
WPS #15		SMAW + FCAW	GROUP 1,2,3 & 4	4 W/ INOUT, 1,2,3&6 WITH	UPHILL	5.1, 5.3	API 5L GR X52	E7018-1	E71T-1C	2.5 SMAW, 11.8 FCAW	6G	5MM - SMAW, 5MM TO UNLIMITED FCAW			AWSD1.1
WPS #16		SMAW	ASTM A572 GR 50 TO AISI 4140	1, 2, 3 & 4 WITH BACKING	F & H	5.1	ASTM A572 GR 50 TO AISI 4140	7018-1	7018-1	12MM TO 25.4MM	2F (F & H)	3MM TO UNLIMITED			AWSD1.1 fillet joint PJP
WPS #17		SMAW + FCAW	ASTM A992 TO S355 J2+N	1,4,6	UPHILL	5.1, 5.20	ASTM A992 TO S355 J2+N	E7018-1	E71T-1C	25	3G				
WPS #19		GMAW	S355J2+N TO S355J2+N	6	GROOVE UPHILL	5.28	S355J2+N TO S355J2+N	ER110S-G	ER110S-G	25MM TO 25MM	ALL	3MM TO UNLIMITED			AWS D1.1 but joint CJP
WPS #20		GMAW	S700E TO S700E	6	GROOVE UPHILL	5.28	S700E TO S700E	ER110S-G	ER110S-G	12MM TO 12MM	ALL	3MM TO 24MM			HOLD
WPS #21		GMAW	S700E TO S355J0+N	6	GROOVE UPHILL	5.28	S700E TO S355J0+N	ER110S-G	ER110S-G	20MM TO 20MM	ALL	3MM TO 40MM			HOLD
WPS #22		GMAW	EN8 TO S700E	6	GROOVE UPHILL	5.28	EN8 TO S700E	ER110S-G	ER110S-G	12MM TO 40MM	ALL	3MM TO UNLIMITED			HOLD
WPS #23		FCAW	S355J0+N TO S275JR+AR	6	GROOVE UPHILL	5.2	S355J0+N	E71T-1C	E71T-1C	16MM TO 16MM	ALL	3MM TO 32MM			AWSD1.1



PROJECT PHOTOS

4F SERVICING RIG MAST ASSEMBLY

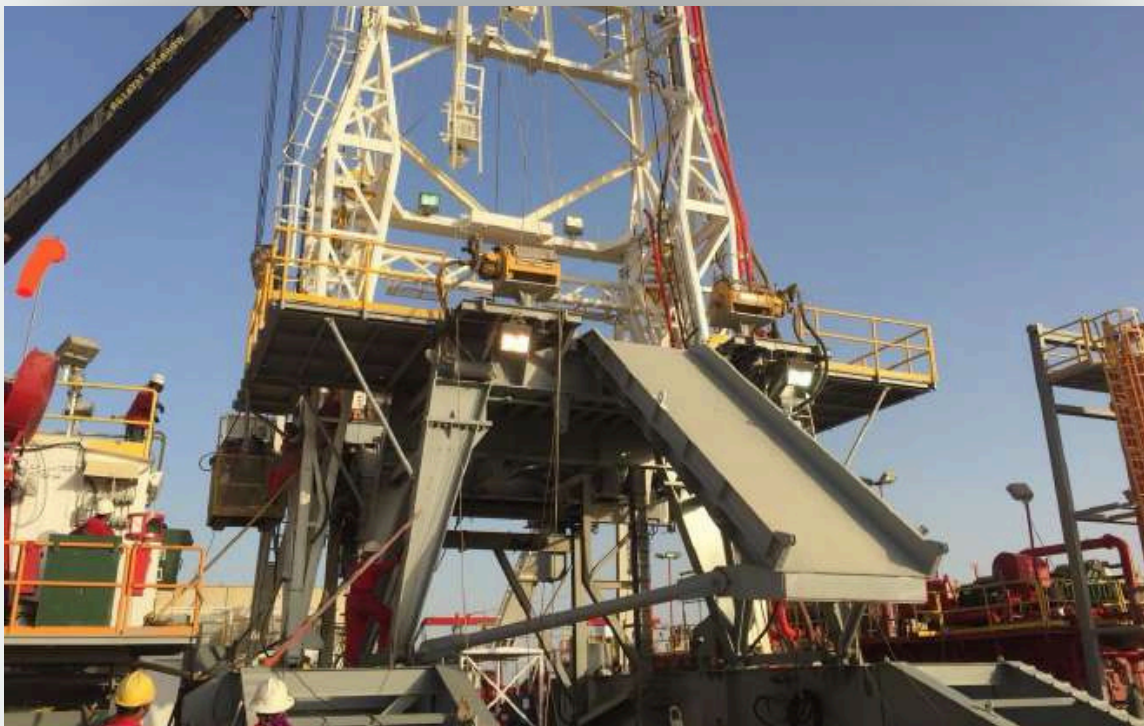
LEADER IN STEEL FABRICATION



API PROJECTS

4F SUBSTRUCTURE - PSL-1, 1100 KIPS

LEADER IN STEEL FABRICATION



API PROJECTS

4F MAST ASSEMBLY - PSL 1

LEADER IN STEEL FABRICATION



API PROJECTS

4F SERVICING RIG MAST ASSEMBLY, PSL-1, 160 KIP

LEADER IN STEEL FABRICATION



API PROJECTS

4F SUBSTRUCTURE COMPONENTS



LEADER IN STEEL FABRICATION



API PROJECTS

4F SUBSTRUCTURE COMPONENTS

LEADER IN STEEL FABRICATION



API PROJECTS

4F SUBSTRUCTURE COMPONENTS

LEADER IN STEEL FABRICATION



API PROJECTS

MILD STEEL FABRICATION

LEADER IN STEEL FABRICATION



API PROJECTS

WATER TREATMENT TANKS

LEADER IN STEEL FABRICATION



PROJECT PHOTOS

STAINLESS STEEL FABRICATION

LEADER IN STEEL FABRICATION



PROJECT PHOTOS

SKIDS, PIPING, AND ASSEMBLY

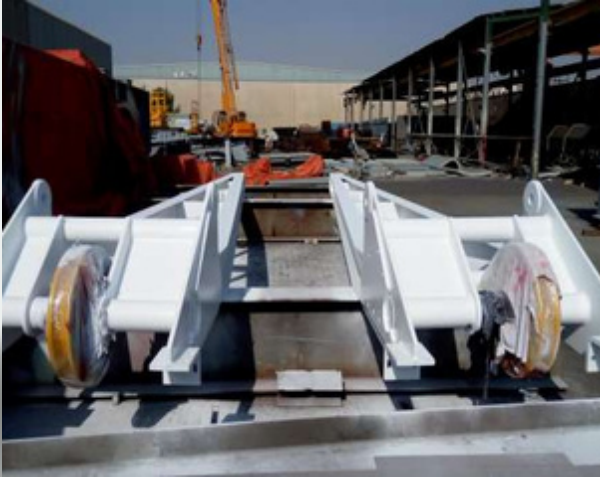
LEADER IN STEEL FABRICATION



PROJECT PHOTOS

OIL AND GAS SUBSTRUCTURE AND COMPONENTS

LEADER IN STEEL FABRICATION



PROJECT PHOTOS

MUD TANKS SYSTEM AND STORAGE TANKS

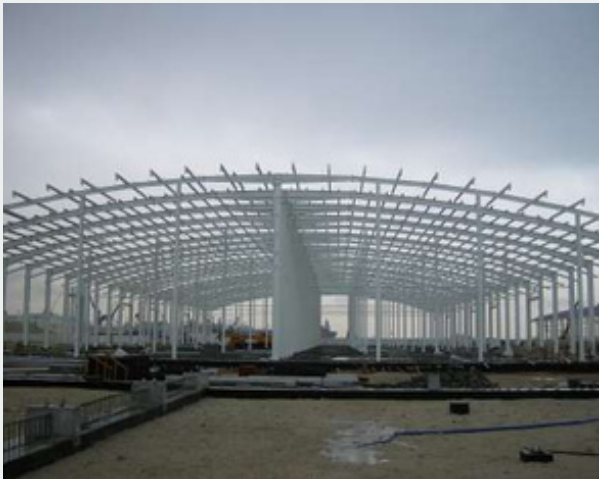
LEADER IN STEEL FABRICATION



PROJECT PHOTOS

STRUCTURAL STEELS

LEADER IN STEEL FABRICATION



PROJECT PHOTOS

LEADER IN STEEL FABRICATION



PROJECT PHOTOS

MILD STEELS FABRICATION

LEADER IN STEEL FABRICATION

